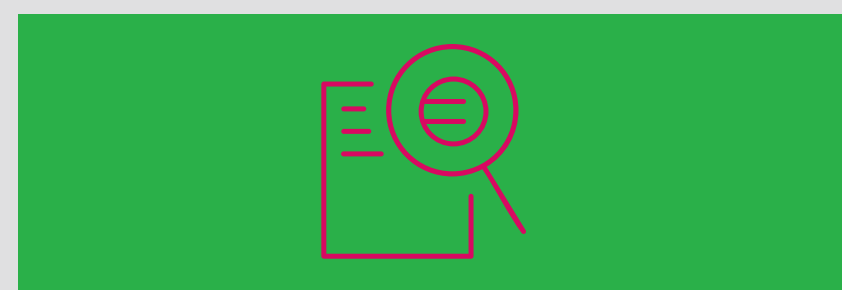


PROGRAMME OVERVIEW AND GOALS

DOROTHY is a postdoctoral research programme open to researchers from all disciplines who wish to focus on research into public health crises. Fellowships provide an opportunity for an international experience and reintegration to Ireland, offers excellent training, career-development and networking opportunities, and gives applicants an opportunity to provide innovative solutions to public health crises.

“This outbreak is a test of solidarity - political, financial and scientific. We need to come together to fight a common enemy that does not respect borders (...). Research is an integral part of the outbreak response”]. **Director-General Dr Tedros Adhanom Ghebreyesus**

WHAT DO I NEED TO DO BEFORE THE LAUNCH OF THE CALL?



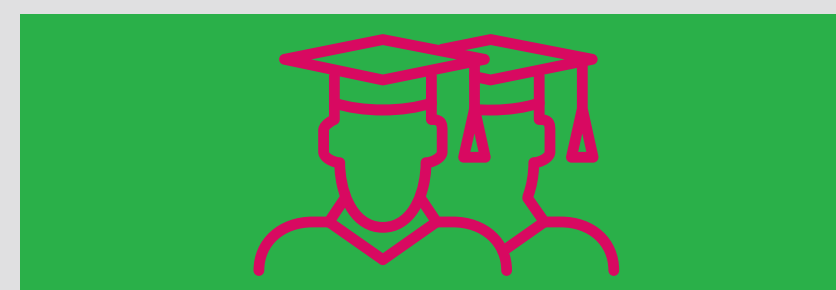
1 | Identify a topic

DOROTHY is open to applicants from all nationalities and disciplines, provided that their research topic relates to public health crises. Research areas will include, but will not be limited to, epidemiology, engineering of materials, health psychology, health economics, social history, medical and health humanities, and philosophy.



2 | Engage in international mobility

All DOROTHY projects start with an outgoing phase in an institution outside of Ireland (18 months followed by reintegration into an Irish HEI). Applicants from all nationalities are welcome provided they haven't resided in the outgoing phase country for more than 12 months in the three years immediately before the call deadline.



3 | Inclusion of a non-academic secondment

In addition to identifying two academic supervisors in Ireland and abroad, applicants are encouraged to include a non-academic secondment (between 3 and 6 months). Should a secondment not have been envisaged at proposal stage, it can be inserted at a later stage, in agreement with the supervisory panel. A non-exhaustive list of interested placement hosts will be available on the project website.



4 | Satisfy Eligibility Criteria

DOROTHY welcomes applicants from all over the world. Applicants must be an Experienced Researcher (ER). The definition of ER in the H2020 MSCA programme will be applied: ERs must, at the call deadline, be in possession of a doctoral degree or have at least four years of full-time equivalent research experience.



5 | Submission Requirement

Submissions will be via SmartSimple submission portal. Applications should be completed in English and include the following:

- > Applicant details
- > Project description
- > Ethics self-assessment form
- > Applicant CV
- > IRC privacy notice

Interested applicants should start identifying hosting HEIs and supervisors as soon as possible. **For further information visit www.research.ie or @IrishResearch.**