

SSH Integration in Horizon Europe's Cluster 3

Mikołaj Pyczak, Cluster 2 NCP (Poland)

13 June 2024

Policy Background

“The Programme should support R&I activities in the field of social sciences and humanities (SSH). This entails advancing scientific knowledge in that domain and **making use of insights and progress from SSH to increase economic and societal impact of the Programme.**”

Horizon Europe Regulation, Para. 14, L 170/3

“Horizon Europe shall ensure a **multidisciplinary approach** and shall foresee, where appropriate, the **integration of social sciences and humanities across all clusters and activities** developed under the Programme, **including specific calls on SSH related topics.**”

Horizon Europe Regulation, Art. 7 “Principles of the Problem”, para. 2

“The **effective integration of social sciences and humanities (SSH) in all clusters**, including all **missions and partnerships**, is a principle through the Programme cycle. **SSH are a key constituent of research and innovation**, especially regarding the twin green and digital transitions.”

Horizon Europe Strategic Plan 2021-24

Why SSH Integration?

- ▶ Need for “**human centric**” focus in all research areas
- ▶ Develop **better solutions to complex problems** facing Europe/the world
 - ▶ **Technical solutions are not enough!**
- ▶ Develop solutions with **clear social relevance**, cost effectiveness, and marketability
- ▶ Integration of SSH disciplines in R&I projects leads to **stronger societal impact, broader/better citizen engagement**

What is SSH Integration?

- ▶ A **technical term** of the European Commission referring to the doing of **inter-/multi-/transdisciplinary research**
- ▶ Refers to heterogeneous groups of actors (i.e. researchers) stemming from **different disciplines** within the **social sciences and humanities** (“SSH”)
- ▶ Differing **thematic specialties** and **methodological approaches**

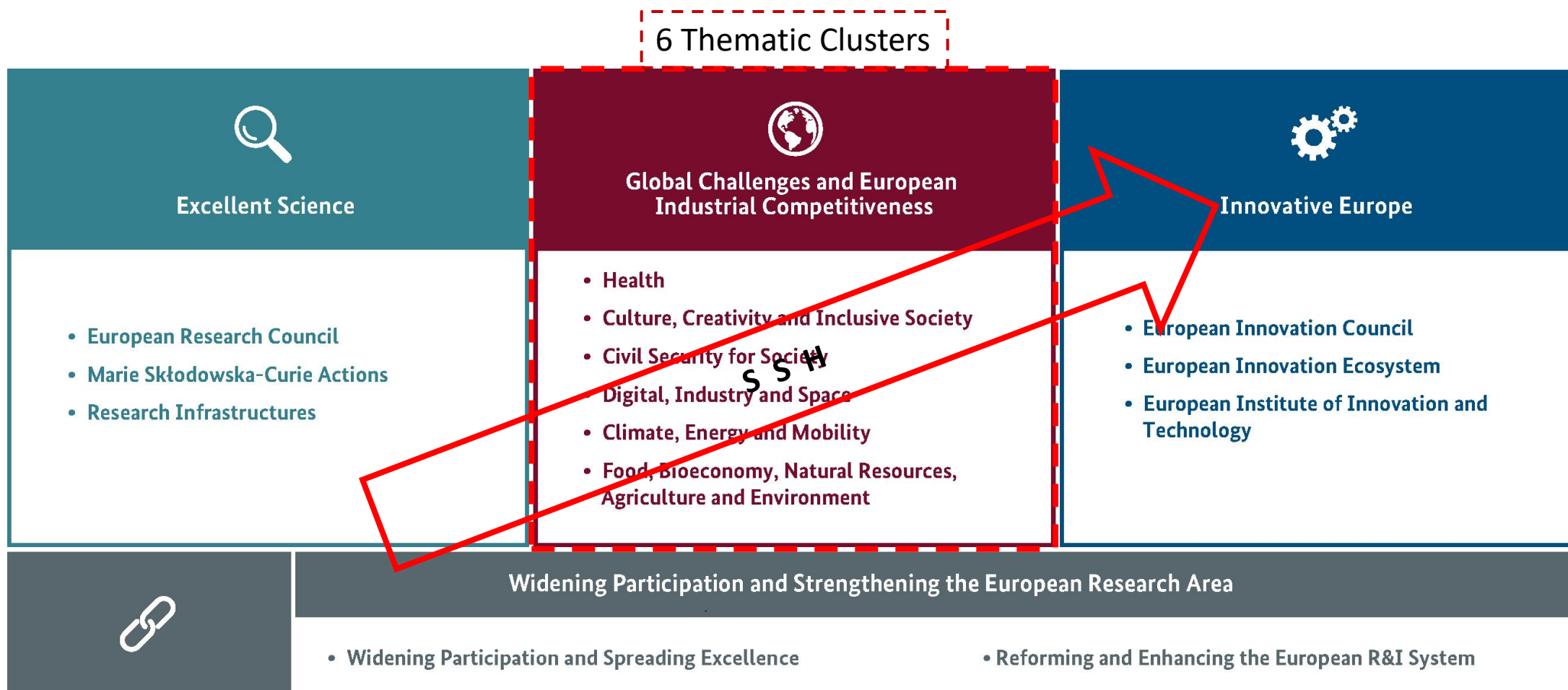
SSH Integration: H2020 & Horizon Europe



- ▶ SSH Integration as **cross-cutting** issue
- ▶ Inter-/multi-/transdisciplinarity as evaluation criterion

- ▶ SSH Integration as cross-cutting issue & **research principle**
- ▶ Clearly mentioned in topic text as part of “expected societal impacts”

SSH Integration in Horizon Europe



SSH Aspects in Horizon Europe include...



human behaviour,
lifestyle, well-being



historical aspects

variations across social groups



Economic analysis/
business models



legal, institutional & political
frameworks

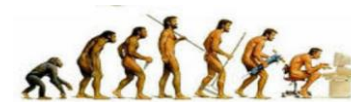


demographic trends, socio-
geographic aspects



social
innovation

cultural &
anthropological aspects



Source: Net4 Society

Why include SSH in a proposal?

- ▶ European Commission **explicitly calls on SSH experts** to contribute to framing the questions and issues to be tackled in Horizon Europe
- ▶ Topics are **'flagged' for SSH** by European Commission, i.e. they **point to SSH research as integral part of the expertise needed** to properly address the issue outlined in the topic
- ▶ Proposals submitted for topics 'flagged' for SSH should contain **meaningful, integrated contributions from SSH researchers**

Why include SSH in a proposal?

- ▶ Depending on the topic: **indispensable** for understanding the challenge to be addressed
- ▶ SSH perspectives can lead to **new findings, approaches, and solutions**
- ▶ Improved application/use of project results: complex social problems require socially acceptable solutions and products
- ▶ **Better chances** during evaluation (for SSH-relevant topics)

Evaluation of SSH Integration in Horizon Europe

Three evaluation criteria regarding SSH aspects observed by evaluators:

Excellence

For topics indicating the need for the integration of social sciences and humanities, is the role of these disciplines properly addressed?

Impact

Are the proposed dissemination, exploitation and communication measures suitable?

Implementation

Does the consortium match the project's objectives, and bring together the necessary disciplinary and interdisciplinary knowledge?

For topics flagged as SSH relevant, does **the consortium** include **expertise in social sciences and humanities**?

Flagging SSH research in Horizon Europe

Flagging: “to mark (an item) for attention or treatment in a specified way”.

- ▶ Main instrument used by the European Commission to ensure involvement of specific SSH research methods, competencies, and skills in funded research projects
- ▶ Flagging in all non-Cluster 2 clusters and missions
- ▶ **Specific terminology** (i.e. words and phrases) used to identify SSH research / researcher / expert involvement

Flagging SSH research in Horizon Europe

Usage of a standard sentence for all SSH-flagged topics (scope section), starting with
WP 2023-24 (Clusters 1, 3, 4, 5, 6)

“This topic requires the effective contribution of SSH disciplines and the involvement of SSH experts, institutions as well as the inclusion of relevant SSH expertise, in order to produce meaningful and significant effects enhancing the societal impact of the related research activities.”

How to know a topic is SSH-flagged

▶ Ask two key questions:

- ▶ Are both SSH terminology and SSH-oriented research questions included in the scope section of the topic?
- ▶ Will the consortium require SSH partners to adequately and comprehensively address the issue at stake?

Types of SSH-flagged topics

“Dedicated” SSH-focused research in Horizon Europe Programme area **Cluster 2 (CL2) Work Programmes**:

- ▶ Finding a solution relies on knowledge and input from SSH researchers and practitioners
- ▶ Consortia submitting proposals will mainly consist of partners from **various SSH** disciplines

EU Missions:

- ▶ The **majority** of missions have an SSH dimension
- ▶ Missions highly focused on **generating social transformations/societal impact**
- ▶ Tied to [six EU policy priorities](#)

Topics with SSH components in **other Horizon Europe Clusters’ Work Programmes** :

- ▶ Multidisciplinary topics where finding a solution requires knowledge and input from both SSH and STEM
- ▶ Consortia submitting proposals will need to include **both** STEM and SSH partners

Identifying SSH terminology (non-CL2)

CLUSTER 4 Digital, Industry and Space Work Programme 2023-24 (example!)	
elementary	<p>“requires the effective contribution of SSH disciplines”</p> <p>“requires an interdisciplinary approach with the effective contribution of SSH”</p> <p>“encourages a radically new approach to inclusion of humanities in R&I”</p>
intensive	<p>“present a strategy for skill development, associating social partners where relevant”</p> <p>“a human centric approach should be integrated”</p> <p>“SSH is particularly relevant in addressing aspects related to...”</p>
partial	<p>“with appropriate contributions/expertise from SSH”</p> <p>“including the relevant SSH dimension”</p> <p>“produce outcomes enhancing its societal impact”</p>
marginal	<p>“take into account the SSH aspect of this”</p> <p>“may benefit from being addressed by SSH”</p>

Locating SSH topics: EU Funding & Tenders Opportunities Portal

Submission status

✓

Forthcoming

✓

Open for submission (6)

☐

Closed

Programming period

2021 - 2027 (6) x v

Horizon Europe (HORIZON) x

Programme part

Select a Programme part... v

Mission

Mission: Soil health and food (6) x v

Destination

Select a Destination... v

Quick search on specific priorities

Socio-economic science and humanities (6) x v

Type of action	HORIZON Research and Innovation Actions	Deadline model	single-stage
Opening date	12 May 2022	Deadline date	27 September 2022 17:00:00 Brussels time

Network on carbon farming for agricultural and forest soils Call for proposal Grant

HORIZON-MISS-2022-SOIL-01-06

Programme	Horizon Europe (HORIZON)	Status	Open for submission
Type of action	HORIZON Coordination and Support Actions	Deadline model	single-stage
Opening date	12 May 2022	Deadline date	27 September 2022 17:00:00 Brussels time

Foster soil education across society Call for proposal Grant

HORIZON-MISS-2022-SOIL-01-07

Programme	Horizon Europe (HORIZON)	Status	Open for submission
Type of action	HORIZON Research and Innovation Actions	Deadline model	single-stage
Opening date	12 May 2022	Deadline date	27 September 2022 17:00:00 Brussels time

Citizen science for soil health Call for proposal Grant

HORIZON-MISS-2022-SOIL-01-09

Programme	Horizon Europe (HORIZON)	Status	Open for submission
Type of action	HORIZON Research and Innovation Actions	Deadline model	single-stage
Opening date	12 May 2022	Deadline date	27 September 2022 17:00:00 Brussels time

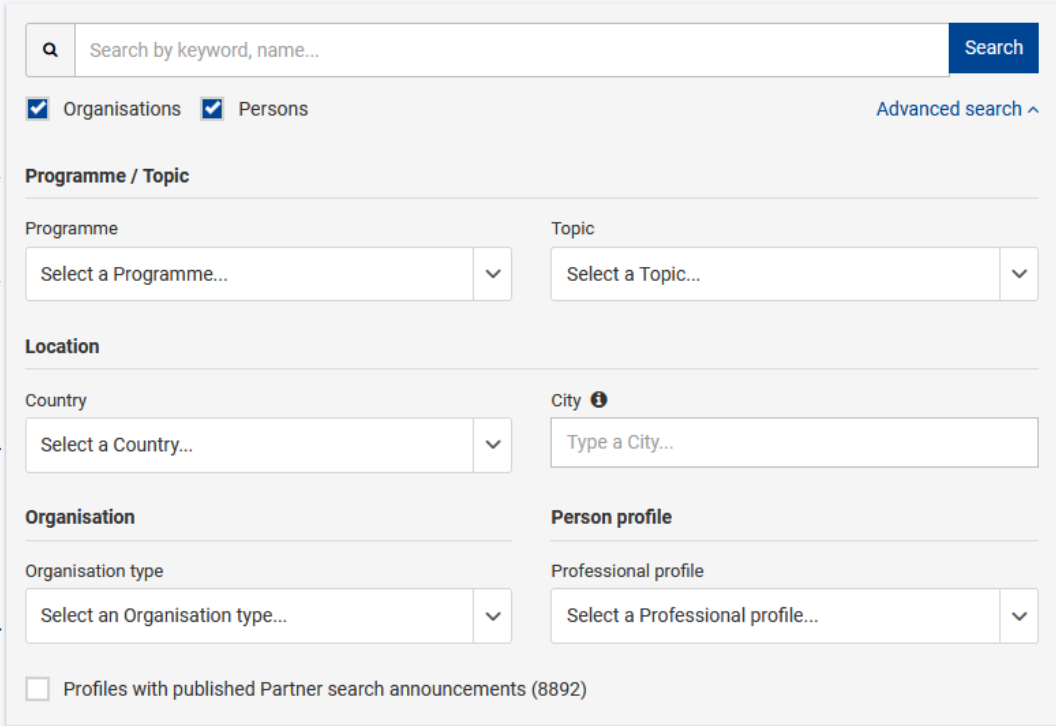
Locating SSH partners: EU Partner Search

Partner search

<https://ec.europa.eu/info/funding-tenders/opportunities/portal/screen/how-to-participate/partner-search>

or

<https://webgate.ec.europa.eu/> (manual)



The screenshot shows the 'Partner search' interface. At the top is a navigation bar with 'SEARCH FUNDING & TENDERS', 'HOW TO PARTICIPATE', 'PROJECTS & RESULTS', 'WORK AS AN EXPERT', and 'SUPPORT'. Below the navigation bar, the search form includes a search bar with the placeholder 'Search by keyword, name...' and a 'Search' button. There are two checked checkboxes for 'Organisations' and 'Persons', and a link for 'Advanced search'. The form is divided into several sections: 'Programme / Topic' with dropdowns for 'Programme' and 'Topic'; 'Location' with dropdowns for 'Country' and a text input for 'City'; 'Organisation' with a dropdown for 'Organisation type'; and 'Person profile' with a dropdown for 'Professional profile'. At the bottom, there is a checkbox for 'Profiles with published Partner search announcements (8892)'. Yellow arrows point to the search bar, the 'Organisations' and 'Persons' checkboxes, the 'Programme' and 'Topic' dropdowns, the 'Country' dropdown, the 'City' input, the 'Organisation type' dropdown, and the 'Professional profile' dropdown.

Locating SSH partners: Networking events other Clusters

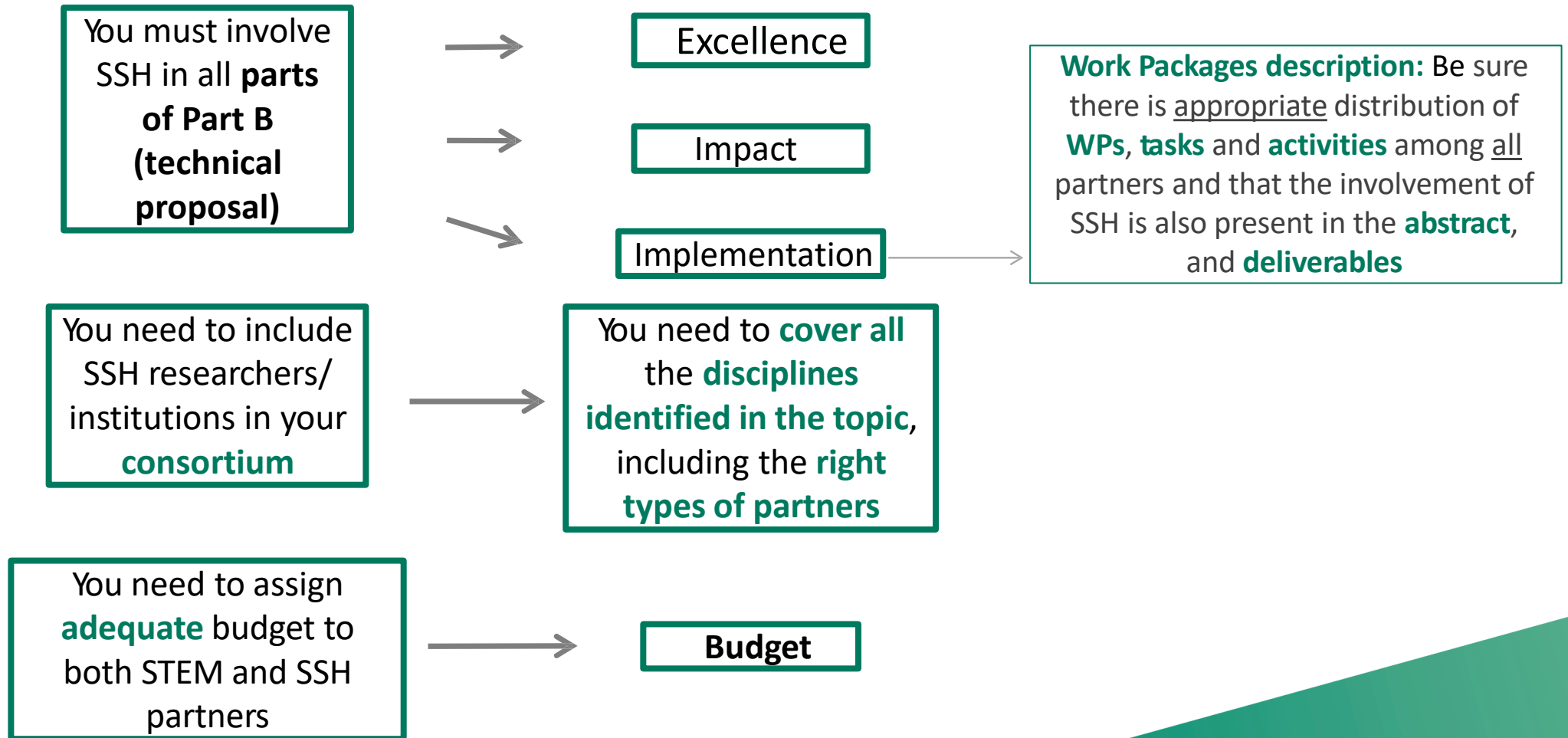


<https://horizoneuropencppportal.eu/>

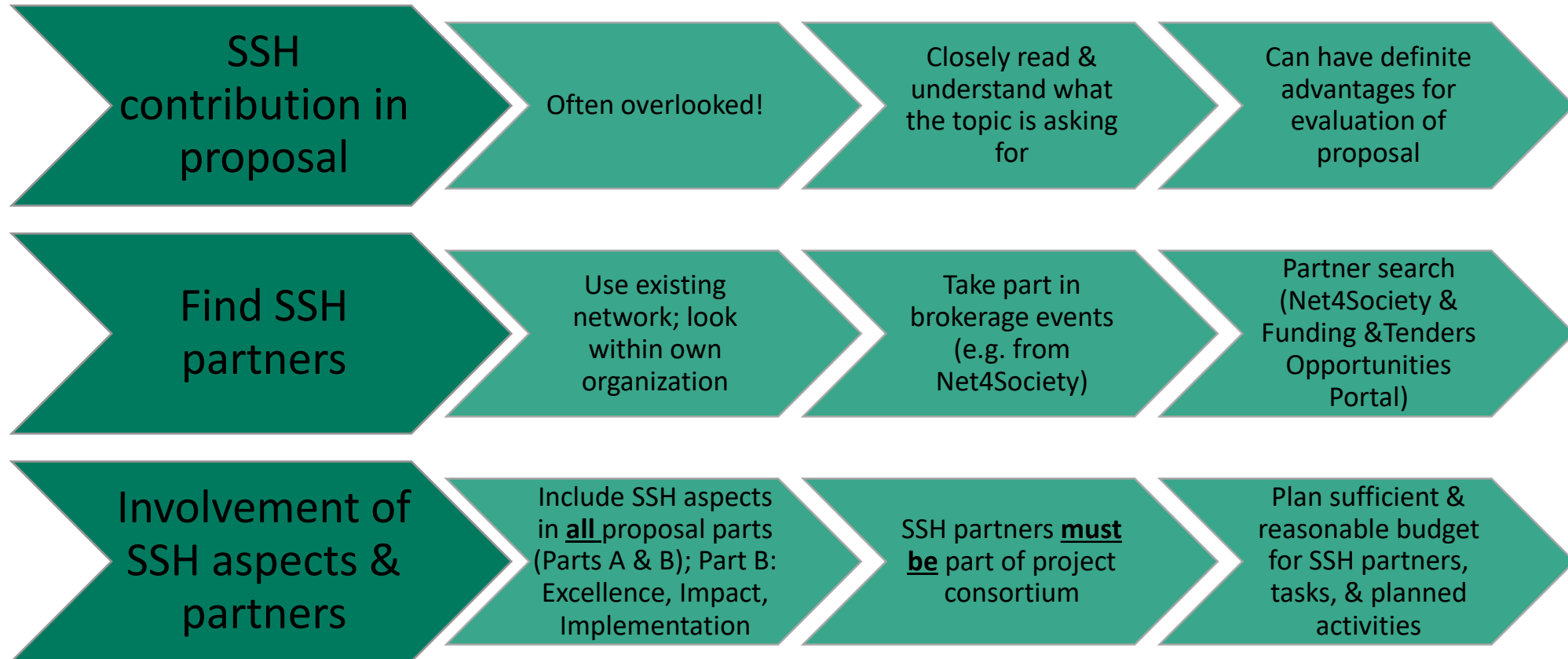
Click "STAGE" button on the website and learn about more upcoming networking opportunities



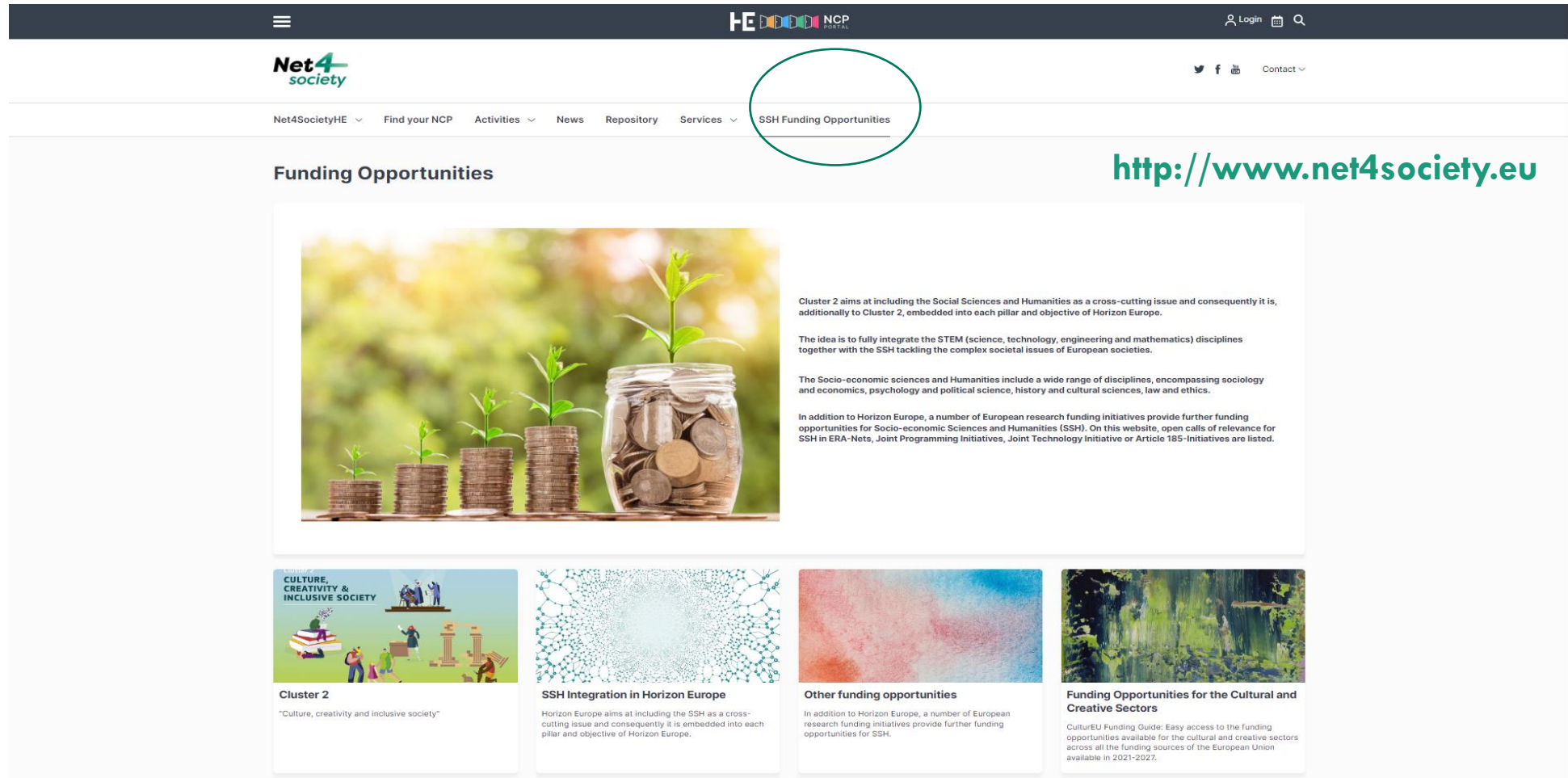
Include SSH in proposal



SSH Integration: practical tips (summary)



Support Tools & Services



The screenshot shows the Net4Society website interface. At the top, there is a dark navigation bar with a menu icon, the HE logo, and a search bar. Below this is a white header with the Net4Society logo and social media icons. A secondary navigation bar contains several menu items: Net4SocietyHE, Find your NCP, Activities, News, Repository, Services, and SSH Funding Opportunities. The 'SSH Funding Opportunities' item is circled in green. Below the navigation, the main content area features a large image of a glass jar filled with coins and a small plant growing from it. To the right of this image is a text block titled 'Funding Opportunities' with a URL <http://www.net4society.eu>. Below the main image are four smaller cards, each with a title and a brief description of funding opportunities.

SSH Funding Opportunities

<http://www.net4society.eu>

Funding Opportunities

Cluster 2 aims at including the Social Sciences and Humanities as a cross-cutting issue and consequently it is, additionally to Cluster 2, embedded into each pillar and objective of Horizon Europe.

The idea is to fully integrate the STEM (science, technology, engineering and mathematics) disciplines together with the SSH tackling the complex societal issues of European societies.

The Socio-economic sciences and Humanities include a wide range of disciplines, encompassing sociology and economics, psychology and political science, history and cultural sciences, law and ethics.

In addition to Horizon Europe, a number of European research funding initiatives provide further funding opportunities for Socio-economic Sciences and Humanities (SSH). On this website, open calls of relevance for SSH in ERA-Nets, Joint Programming Initiatives, Joint Technology Initiative or Article 185-Initiatives are listed.

Cluster 2
"Culture, creativity and inclusive society"

SSH Integration in Horizon Europe
Horizon Europe aims at including the SSH as a cross-cutting issue and consequently it is embedded into each pillar and objective of Horizon Europe.

Other funding opportunities
In addition to Horizon Europe, a number of European research funding initiatives provide further funding opportunities for SSH.

Funding Opportunities for the Cultural and Creative Sectors
CulturEU Funding Guide: Easy access to the funding opportunities available for the cultural and creative sectors across all the funding sources of the European Union available in 2021-2027.

SSH Opportunities Document

“Opportunities for Researchers from the Socio-economic Sciences and Humanities (SSH) in Horizon Europe”

- ▶ **Overview** of SSH funding chances in Horizon Europe Programme (all Clusters & some other programming areas)
- ▶ Goes **beyond** European Commission flagged topics
- ▶ **3 categories: dedicated** topics, **relevant** topics, topics with **minor SSH relevance**
- ▶ Published regularly during project runtime
- ▶ **Current edition: May 2024 ([LINK](#))**

Opportunities for Researchers from the Social Sciences and Humanities (SSH) in Horizon Europe

Analysis of SSH-relevant Topics in Work Programme 2023-2025

May 2024 update

Call - Fighting Crime and Terrorism 2024

Deadline: 20 November 2024

Topic	SSH aspects
<p>HORIZON-CL3-2024-FCT-01-03 Lawful evidence collection in online child sexual abuse investigations, including undercover</p> <p>Link</p>	<p>Research in this area should tackle legislative frameworks to collecting evidence in online, including undercover, investigations of child sexual abuse, leading to guidelines and manuals that would make the capability available across the EU to target these offenders more effectively.</p> <p>Special care needs to be given to ethics and fundamental rights protection throughout the research and the solutions proposed.</p> <p>This topic requires the effective contribution of SSH disciplines and the involvement of SSH experts, institutions as well as the inclusion of relevant SSH expertise, in order to produce meaningful and significant effects enhancing the societal impact of the related innovation activities.</p> <p>Main keywords: Law, Criminology, Ethics</p>
<p>HORIZON-CL3-2024-FCT-01-04 Radicalisation and gender</p> <p>Link</p>	<p>In order to improve understandings of radicalization and gender we need to study how and why gender norms appear as an increasingly contested area of politics with strong mobilizing power. What role gender norms and equality policies play in stabilizing and destabilizing social and political order, and how ideas and norms about gender equality make people react, mobilize and engage politically, at present, in the past and in the future.</p> <p>Proposals should recognise not only the cultural, social and economic diversity of the milieus, but as mentioned above also be gender sensitive.</p> <p>This topic requires the effective contribution of SSH disciplines and the involvement of SSH experts, institutions as well as the inclusion of relevant SSH expertise, in order to produce meaningful and significant effects enhancing the societal impact of the related innovation activities.</p> <p>Main keywords: Political Science, Social and Cultural studies, Economics, Ethics, Gender studies</p>

Topic	SSH aspects
<p>HORIZON-CL3-2024-FCT-01-05 Combating hate speech online and offline</p> <p>Link</p>	<p>The successful proposal is expected to reinforce hate crime training and capacity building for Police Authorities and other relevant security practitioners, in particular to enhance their tools and methods for lawful detection, reporting and data/evidence collection and analysis of the hate speech related activities that are considered as crime or could lead to a crime.</p> <p>Activities proposed within this topic should address, in a balanced way, both technological and societal dimensions of the issue under consideration.</p> <p>This topic requires the effective contribution of SSH disciplines and the involvement of SSH experts, institutions as well as the inclusion of relevant SSH expertise, in order to produce meaningful and significant effects enhancing the societal impact of the related innovation activities.</p> <p>Main keywords: Law, Sociology, Education, Communication studies</p>
<p>HORIZON-CL3-2024-FCT-01-06 Open Topic</p> <p>Link</p>	<p>Under the Open Topic, proposals are welcome to address both existing and upcoming challenges in fighting crimes strongly influenced by cultural and/or societal issues that are not covered by the other topics of Horizon Europe Calls Fighting Crime and Terrorism 2021-2022, Fighting Crime and Terrorism 2023 and Fighting Crime and Terrorism 2024.</p> <p>Activities proposed within this topic should address, in a balanced way, both technological and societal dimensions of the issue under consideration.</p> <p>This topic requires the effective contribution of SSH disciplines and the involvement of SSH experts, institutions as well as the inclusion of relevant SSH expertise, in order to produce meaningful and significant effects enhancing the societal impact of the related innovation activities.</p> <p>Main keywords: Social and Behavioural studies, Law</p>

Call – Resilient Infrastructure 2024

Deadline: 20 November 2024

Topic	SSH aspects
<p>HORIZON-CL3-2024-INFRA-01-02 Resilient and secure urban planning and new tools for EU territorial entities</p> <p>Link</p>	<p>Projects' results are expected to contribute to all of the following outcomes:</p> <ul style="list-style-type: none">• Evaluation of the resilience of an urban and peri-urban environment, identification of weaknesses and recommendations for changes to organizational processes;• Creation of new tools and cost-efficient security upgrades of urban infrastructures with possibilities of pooling and sharing of complex security systems, taking into account limited budgets of local authorities;• Improved efficiency of the security forces and emergency services (police, firefighters, paramedics ...) for the benefit of the European citizens and residents;• Promotion of best practices, creation of EU sovereign trusted decision support tool/solution and spreading of effective tools and capabilities across entities in different EU territories despite their size and location. <p>This topic requires the effective contribution of SSH disciplines and the involvement of SSH experts, institutions as well as the inclusion of relevant SSH expertise, in order to produce meaningful and significant effects enhancing the societal impact of the related innovation activities.</p> <p>Main keywords: Urban Geography, Social sciences and Humanities</p>
<p>HORIZON-CL3-2024-INFRA-01-03 Advanced real-time data analysis used for infrastructure resilience</p> <p>Link</p>	<p>This topic requires the effective contribution of SSH disciplines and the involvement of SSH experts, institutions as well as the inclusion of relevant SSH expertise, in order to produce meaningful and significant effects enhancing the societal impact of the related innovation activities.</p> <p>Main keywords: Social sciences and Humanities</p>

Call – Disaster-resilient Society 2024

Deadline: 20 November 2024

Topic	SSH aspects
<p>HORIZON-CL3-2024-DRS-01-01 Prevention, detection, response and mitigation of chemical, biological and radiological threats to agricultural production, feed and food processing, distribution and consumption</p> <p>Link</p>	<p>This topic requires the effective contribution of SSH disciplines and the involvement of SSH experts, institutions as well as the inclusion of relevant SSH expertise, in order to produce meaningful and significant effects enhancing the societal impact of the related research activities.</p> <p>Main keywords: Psychology, Sociology</p>
<p>HORIZON-CL3-2024-DRS-01-03 Harmonised / Standard protocols for the implementation of alert and impact forecasting systems as well as transnational emergency management in the areas of high-impact weather / climatic and geological disasters</p> <p>Link</p>	<p>This topic requires the effective contribution of SSH disciplines and the involvement of SSH experts, institutions as well as the inclusion of relevant SSH expertise, in order to produce meaningful and significant effects enhancing the societal impact of the related research/innovation activities</p> <p>Main keywords: Psychology, Sociology, Political Science</p>
<p>HORIZON-CL3-2024-DRS-01-04 Hi-tech capacities for crisis response and recovery after a natural-technological (NaTech) disaster</p> <p>Link</p>	<p>This topic requires the effective contribution of SSH disciplines and the involvement of SSH experts, institutions as well as the inclusion of relevant SSH expertise, in order to produce meaningful and significant effects enhancing the societal impact of the related research/innovation activities.</p> <p>Main keywords: Psychology, Sociology</p>
<p>HORIZON-CL3-2024-DRS-01-05 Cost-effective sustainable technologies and crisis management strategies for RN large-scale protection of population and infrastructures after a nuclear blast or nuclear facility incident</p> <p>Link</p>	<p>This topic requires the effective contribution of SSH disciplines and the involvement of SSH experts, institutions as well as the inclusion of relevant SSH expertise, in order to produce meaningful and significant effects enhancing the societal impact of the related research/innovation activities.</p> <p>Main keywords: Psychology, Sociology, Political Science, Economics</p>

Factsheets* on SSH Integration good practices

- ▶ **Good practice:** examples from successful inter and multidisciplinary projects (project design & carry-out):
 - ▶ Based on interviews with project coordinators different flagged topics
 - ▶ Focus on the **nature** (the “how”) of SSH researchers inclusion in the projects



*H2020-funded projects; no longer actively produced by the project

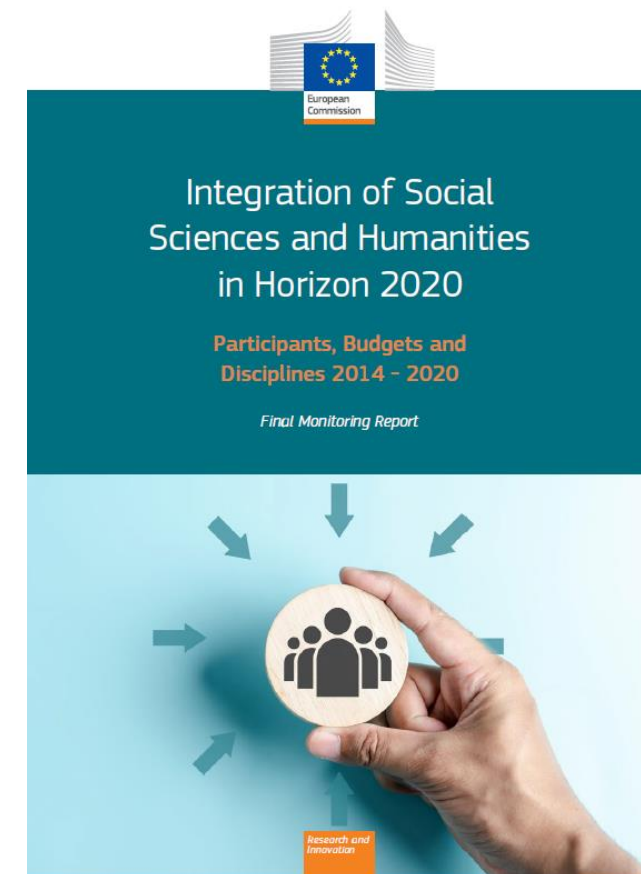
Brokerages

- ▶ Networking events for researchers from the SSH and STE(A)M disciplines, and relevant non-academic actors
 - ▶ B2match tool used to organize meetings online
 - ▶ Online & on-site events planned
 - ▶ Collaboration with other NCP networks



SSH Integration Monitoring Report

- ▶ The monitoring report provides a final assessment of the degree of **SSH integration** in H2020 through an analysis of the projects funded under **SSH-flagged topics**
- ▶ A comprehensive **methodology** has been developed to provide measurable indicators of SSH integration
 - ▶ Number of SSH partner
 - ▶ Budget to SSH partners
 - ▶ Disciplines
 - ▶ Best practices from all areas of H2020

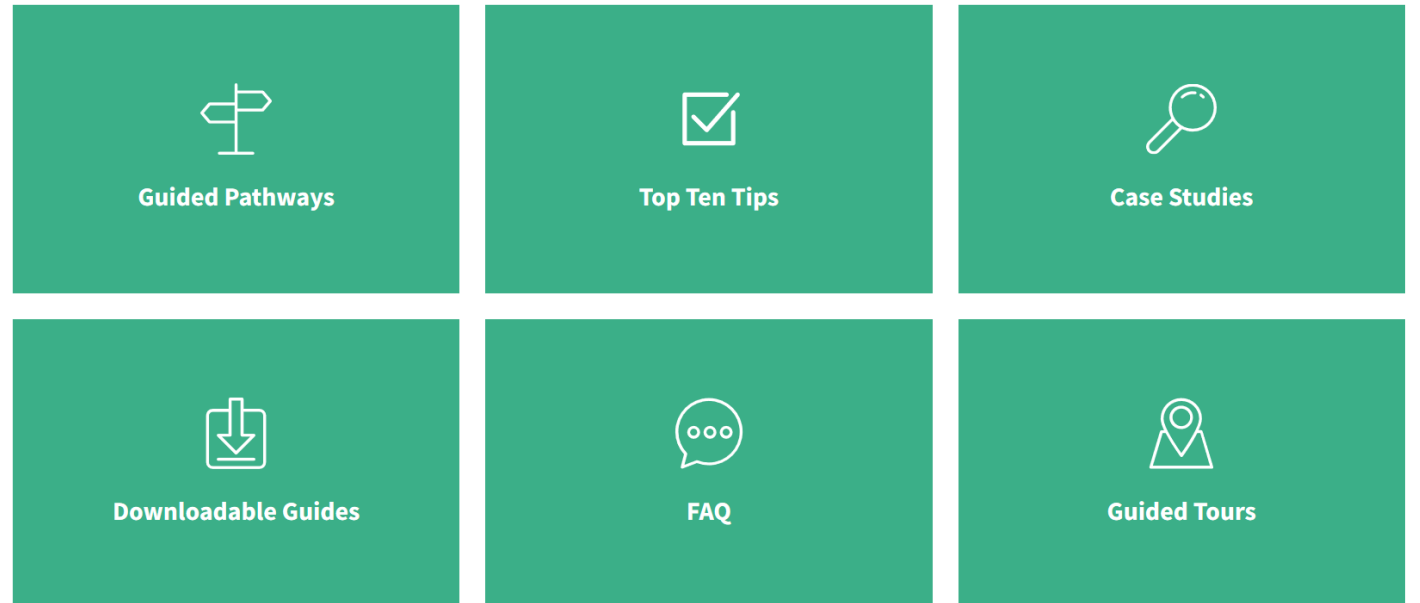


<https://op.europa.eu/en/publication-detail/-/publication/16b7df93-82b3-11ee-99ba-01aa75ed71a1/language-en/format-PDF/source-296361020>

SHAPE-ID Toolkit

- ▶ **Tips, guidelines, examples** on how to carry out interdisciplinary research
- ▶ Designed for use by:
 - ▶ **Researchers**
 - ▶ **Research organizations**
 - ▶ **Research funders/policymakers**
 - ▶ **Societal partners** (e.g. artists/creative practitioners, CSOs, NGOs, non-profits)
- ▶ <https://www.shapeidtoolkit.eu/>

Learn more using the SHAPE-ID Toolkit:



Stay informed & contact us

Social networks:



Website:

www.net4society.eu

Contact the coordination team:

contact@net4society.eu

Mikołaj Pyczak

mikolaj.pyczak@ncbr.gov.pl

**Thank you
for listening!**

Net4*Society*